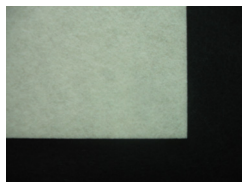


## Technical data Solprotec™

### Product type

Solprotec™



Protective nonwoven for newly laid parquet, clay, ceramic and stone floors. Good breathing, vapour-transmitting (water vapours and vapours from lacquers, adhesives, etc.)

### Characteristic properties

Material

Nonwoven of synthetic fibres  
 Top side with open protective coating

Rear side with slip resistant coating OPTICOAT™ by Landolt

Colour

green

### Technical properties

Unit weight

approx. 150 g/m<sup>2</sup>

Thickness

approx. 2.5 mm

Fire code numbers

-

### Advantages

Helps to prevent accidents (Rear side with active protection against slipping)  
 Environment-friendly (Free of harmful substances, thermally disposable)

Protects newly laid floor covers and stairs  
 (cushion effect)  
 Can be used several times, quickly laid out  
 (Cost saving)

### Important

### Laying

with overlap of 10 cm

### Delivery form Rolls of

Length

50 m

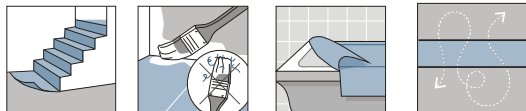
Width

100 / 200 cm

Diameter approx.

40 cm

### Function / Application



Protection against mechanical influences



The values given are average obtained according to internal and external testing. We reserve the right to make changes at any time in accordance with our knowledge, technology and experiences without any notice.